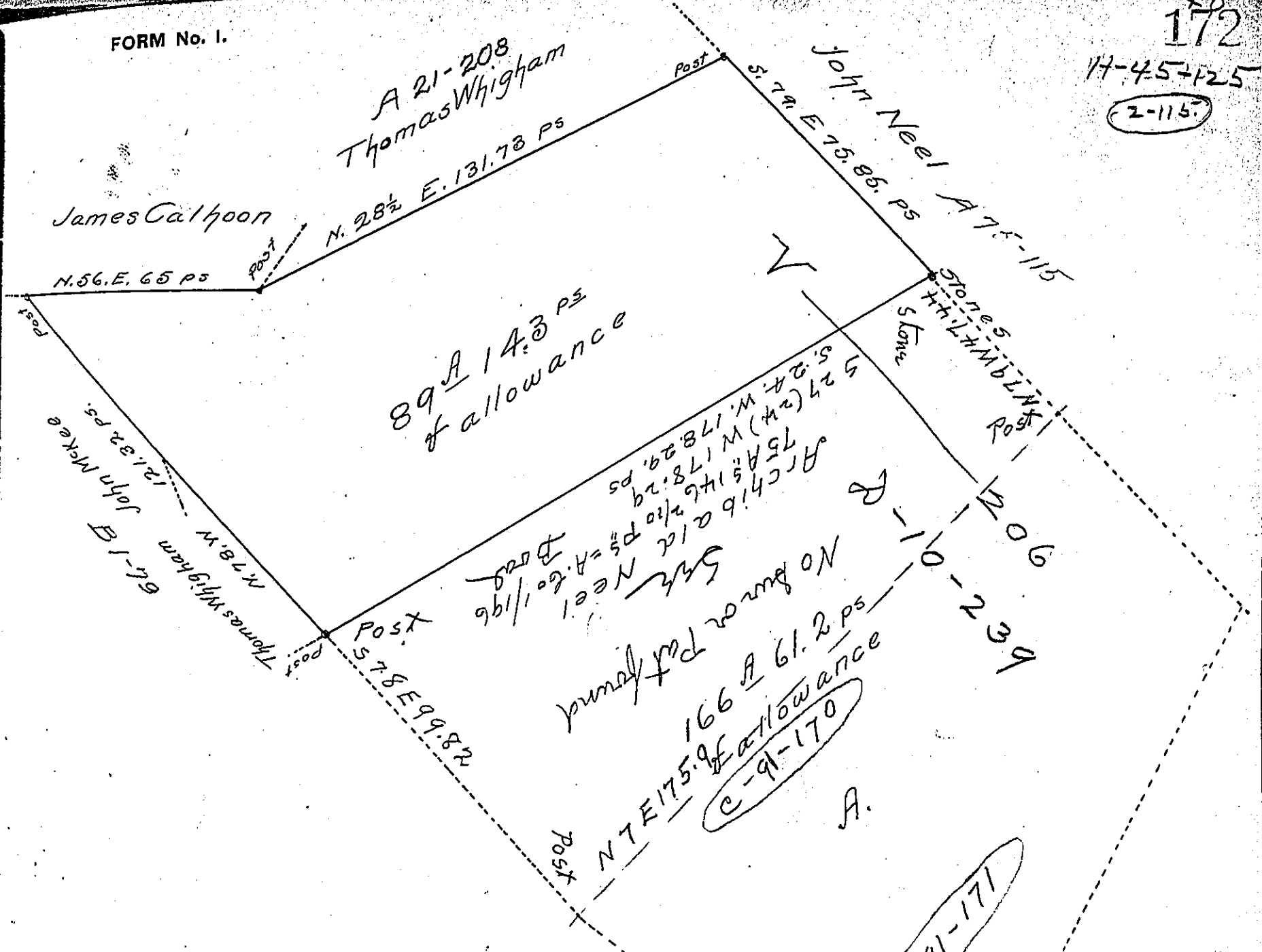


172
17-45-125
2-115



The above is a Draught of a Survey made on the 21st day of January 1842 for Thomas Whigham. Situated in Millin Township Allegheny County. (It being part of an Original Survey made May 4th 1784 by David Reddick Esq. for David McKee in pursuance of a Warrant granted to David Hay dated November 15th 1771) Containing Eighty nine acres fourteen perches and three tenths and allowance of six per cent - Note - The ballance of the tract marked - A - Contains 166 A. 61.2 ps and allowance

To Jacob Sallade Esq. Surveyor Gen. James A. Gibson D.S.

IN TESTIMONY that the above is a copy of the original remaining on file in the Department of Internal Affairs of Pennsylvania, made conformably to an Act of Assembly approved the 16th day of February, 1833, I have hereunto set my Hand and caused the Seal of said Department to be affixed at Harrisburg, this Tenth day of May 1905

James A. Gibson
Secretary of Internal Affairs.